

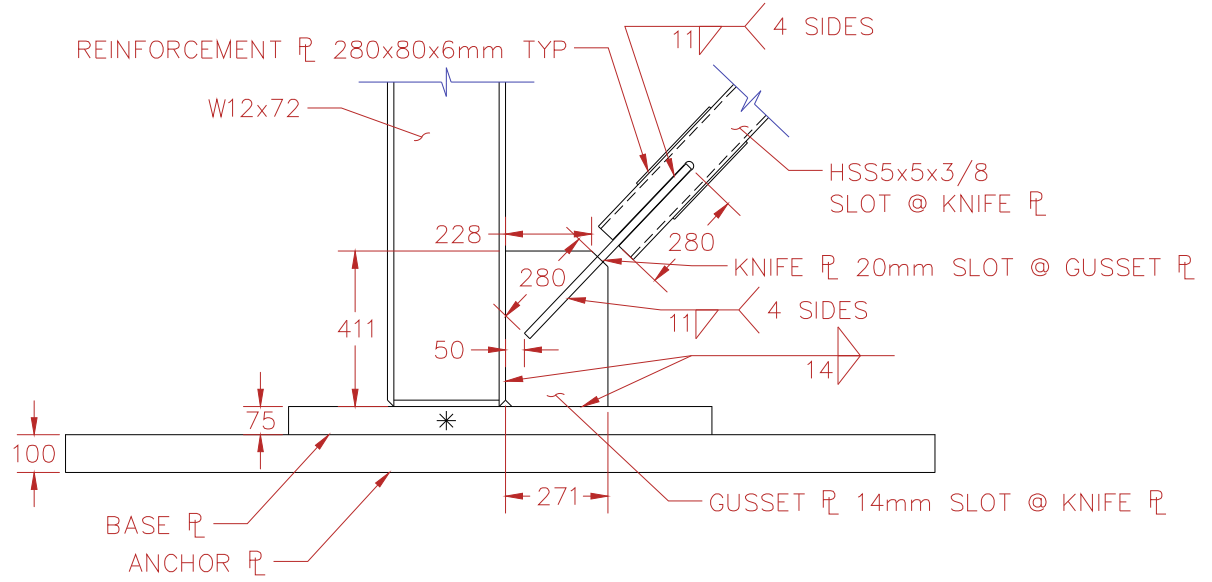
NOTES:
 -ALL PLATE STEEL A572 GR 50 OR EQUIVALENT
 -EXISTING BOTTOM STORY BRACES AND GUSSET PLATES TO BE REMOVED
 -BACK GOUGE SOUTH BOTTOM BEAM SHEAR TAB WELD DAMAGE AND REPAIR WITH 8mm FILLET WELD
 -ALL WELDS SHOULD SATISFY AISC DEMAND CRITICAL AWS E71T-1 OR EQUIVALENT

NCBF-INV-2 - NON-SEISMIC CBF WITH IN-PLANE BUCKLING	
NEESR NCREE BRACED FRAME TEST	
DRAWN BY: ADS DESIGNED BY: ADS DATE: 7/23/2013 CONTACT: ADSEN@UW.EDU	
DWG:	SK-1

A
SK-2

BASE GUSSET PLATE REPAIR DETAIL

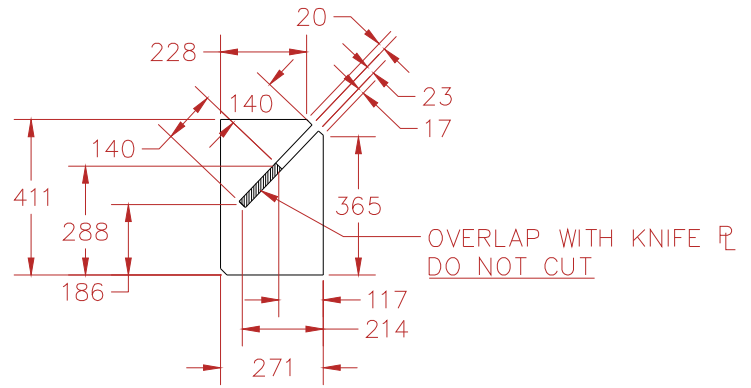
SCALE: 1mm = 20mm



B
SK-2

BASE GUSSET PLATE FABRICATION DETAIL

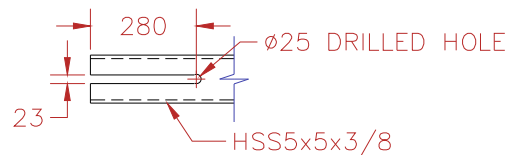
SCALE: 1mm = 20mm



C
SK-2

BRACE SLOT DETAIL

SCALE: 1mm = 20mm



NCBF-INV-2 - NON-SEISMIC CBF WITH IN-PLANE BUCKLING

NEESR NCREE BRACED FRAME TEST

DWG:

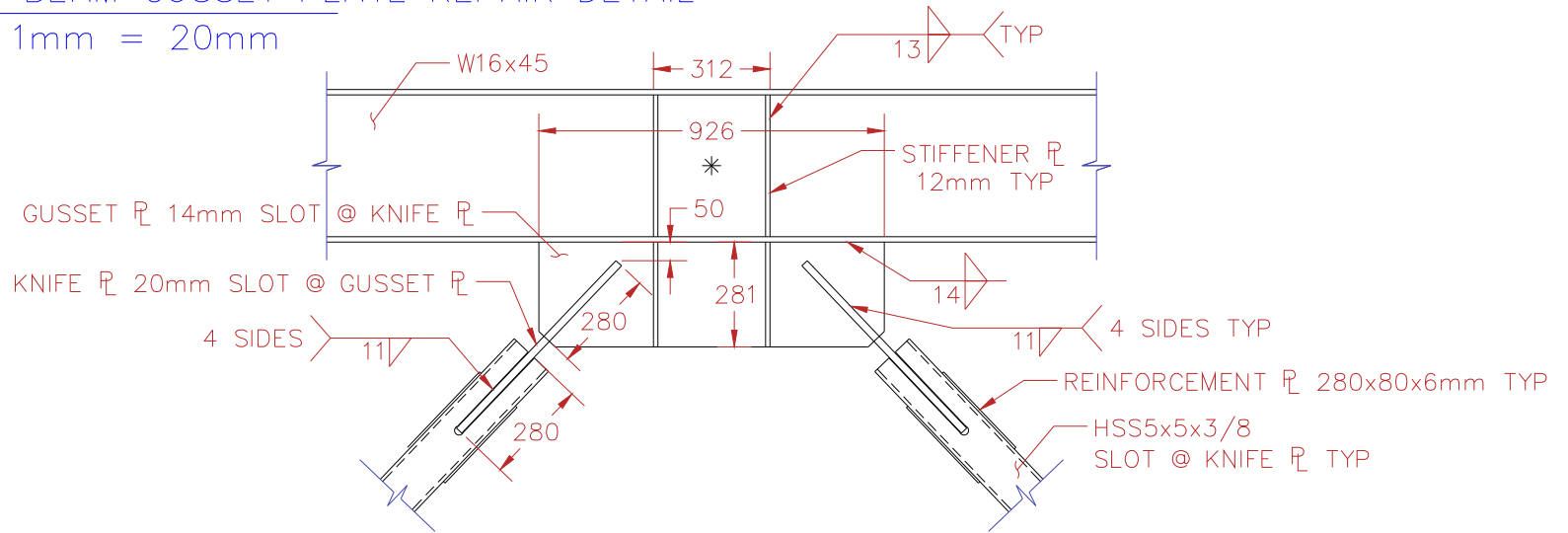
DRAWN BY: ADS
DESIGNED BY: ADS
DATE: 7/26/2013
CONTACT: ADSEN@UW.EDU

SK-2

A
SK-3

BOTTOM BEAM GUSSET PLATE REPAIR DETAIL

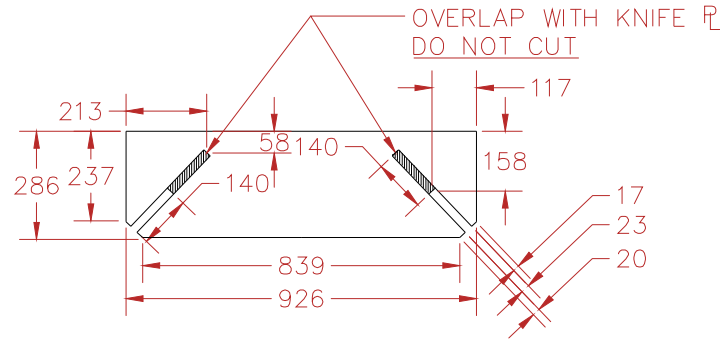
SCALE: 1mm = 20mm



B
SK-3

BOTTOM BEAM GUSSET PLATE FABRICATION DETAIL

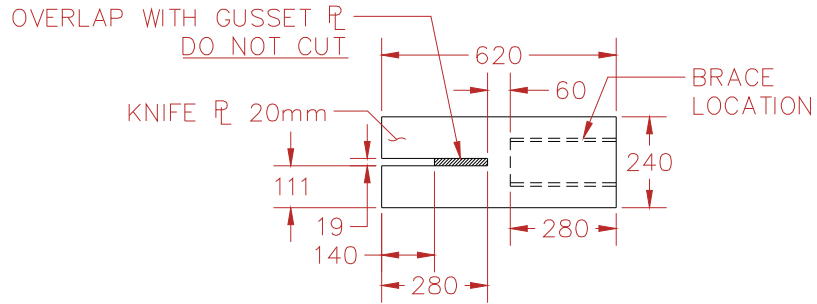
SCALE: 1mm = 20mm



NCBF-INV-2 - NON-SEISMIC CBF WITH IN-PLANE BUCKLING	
NEESR NCREE BRACED FRAME TEST	
DRAWN BY: ADS DESIGNED BY: ADS DATE: 7/26/2013 CONTACT: ADSEN@UW.EDU	
DWG:	SK-3

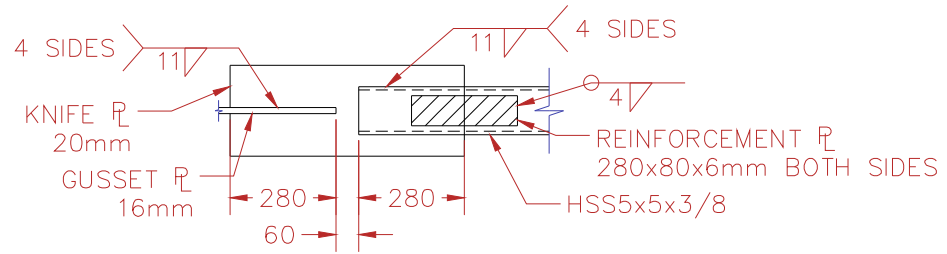
A
SK-4

KNIFE PLATE FABRICATION DETAIL
SCALE: 1mm = 20mm



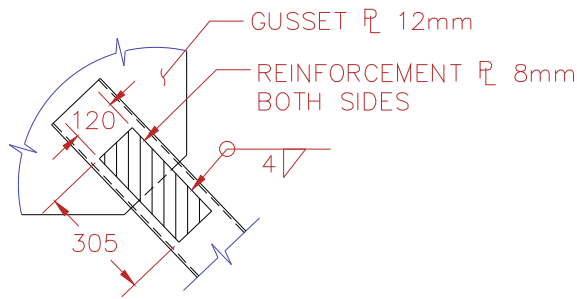
B
SK-4

KNIFE PLATE DETAIL
SCALE: 1mm = 20mm



C
SK-4

TOP STORY NET SECTION REINFORCEMENT DETAIL
SCALE: 1mm = 20mm



NCBF-INV-2 - NON-SEISMIC CBF WITH IN-PLANE BUCKLING

NEESR NCREE BRACED FRAME TEST

DWG:

DRAWN BY: ADS
DESIGNED BY: ADS
DATE: 7/26/2013
CONTACT: ADSEN@UW.EDU

SK-4