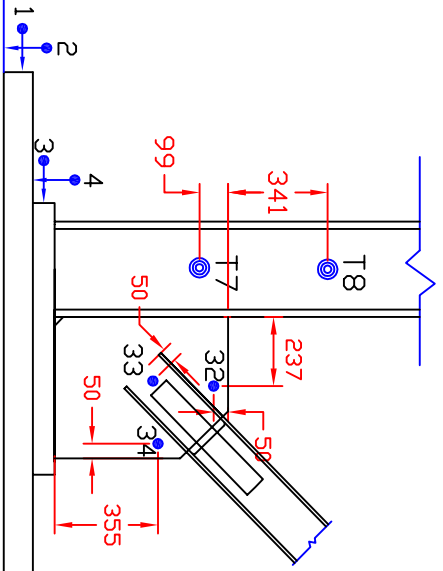
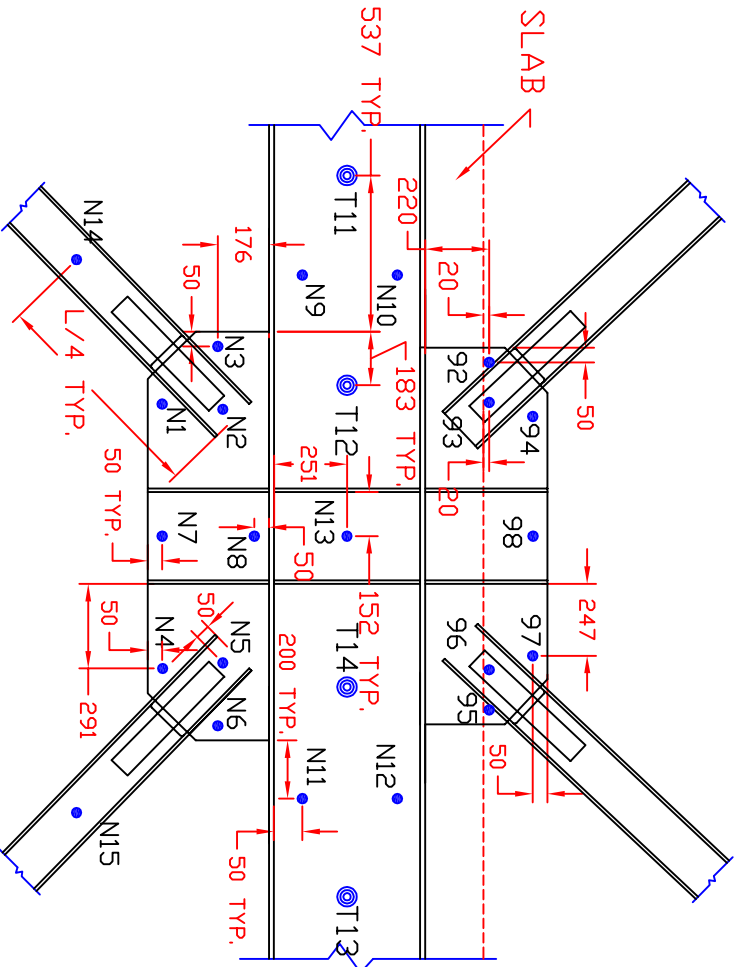


MIDDLE BEAM SIDE GUSSET PLATES, TYP.



LOWER GUSSET PLATE, TYP.



LOWER BEAM MIDDLE GUSSET PLATE

NOTE: THE NDI LED'S ARE MOUNTED ON THE EAST SIDE OF THE FRAME ALL OTHER GAGES ARE ON THE WEST SIDE

<p>T0BF2-2 -- TOMORROW'S CONCENTRIC BRACED FRAME</p>	
<p>NEES/SG NCREE BRACED FRAME TEST</p>	
<p>DRAWN BY: EIL</p>	<p>DWG:</p>
<p>DESIGNED BY: EIL, PCH</p>	<p>IN-5</p>
<p>CHECKED BY: N/A</p>	
<p>DATE: MARCH 19, 2009</p>	
<p>CONTACT: CROEDER@U.WASHINGTON.EDU</p>	