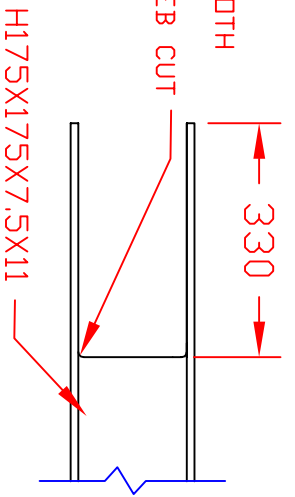
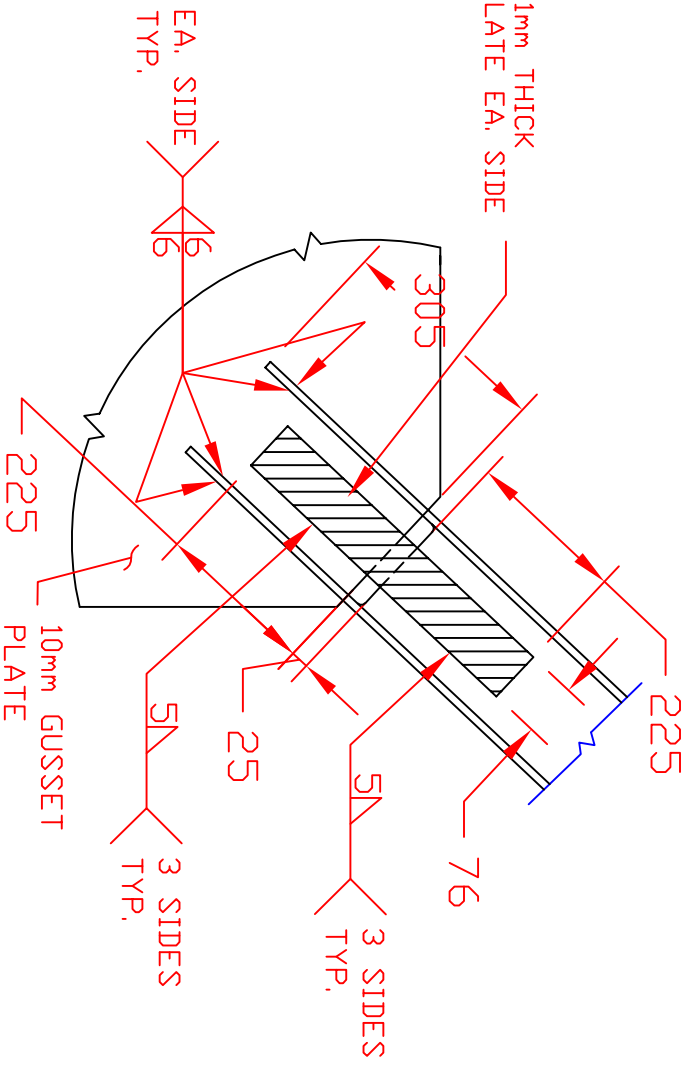


MAKE A SMOOTH  
TRANSITION  
BETWEEN WEB CUT  
AND FLANGE



TYPICAL WEB CUT-OUT DETAIL  
SCALE: 1mm = 10mm

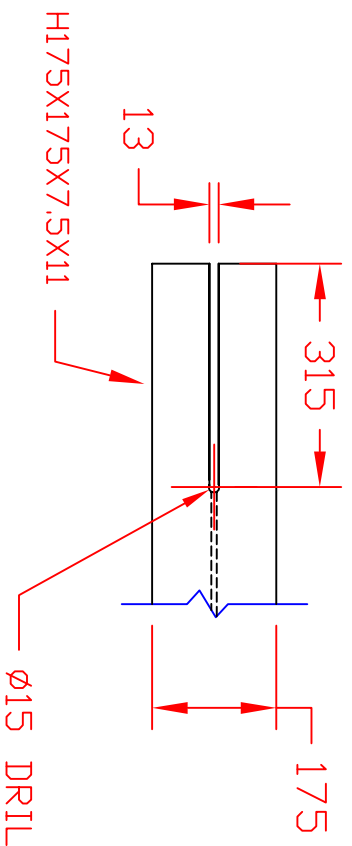
76x475x11mm THICK  
SPLICE PLATE EA. SIDE



NOTE: IF NECESSARY, PLACE A 15mm SHIM BETWEEN THE SPLICE PLATE AND GUSSET PLATE TO CLOSE THE GAP DUE TO THE UNEVEN THICKNESSES

A  
SK-9

TYPICAL WEB PLATE DETAIL  
SCALE: 1mm = 10mm



TYPICAL BRACE SLOT DETAIL  
SCALE: 1mm = 10mm

- NOTES:
- ALL PLATE STEEL A572 DR EQUIVALENT
  - ALL ROLLED SHAPES TO BE A992 DR EQUIVALENT
  - WF BRACE TO BE A992 DR A36, WHICH EVER IS AVAILABLE
  - ALL WELDS TO SATISFY AISC DEMANDS CRITICAL AWS E71T8 DR EQUIVALENT
  - ALL BOLTS TO BE A490 DR EQUIVALENT WITH THREADS EXCLUDED FROM THE SHEAR PLANE

TCBF2-2 - TOMORROW'S CONCENTRIC BRACED FRAME 2-2  
NEES/SG NCREE BRACED FRAME TEST

DRAWN BY: EIL  
DESIGNED BY: EIL  
CHECKED BY: CWR  
DATE: March 8, 2009  
CONTACT: CROEDER@U.WASHINGTON.EDU

DWG: SK-9