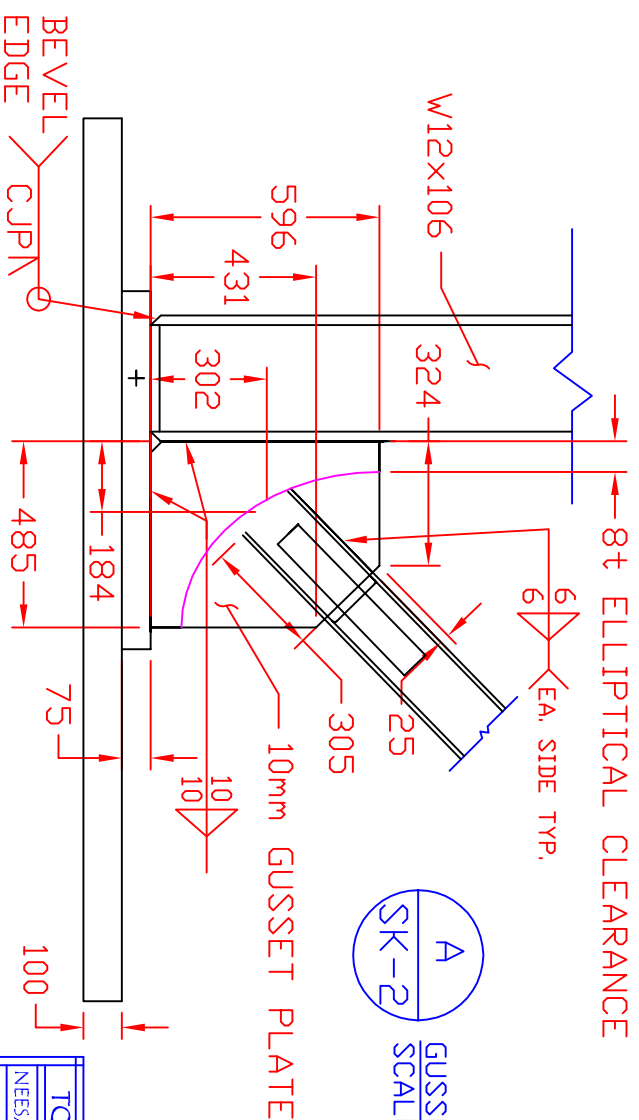
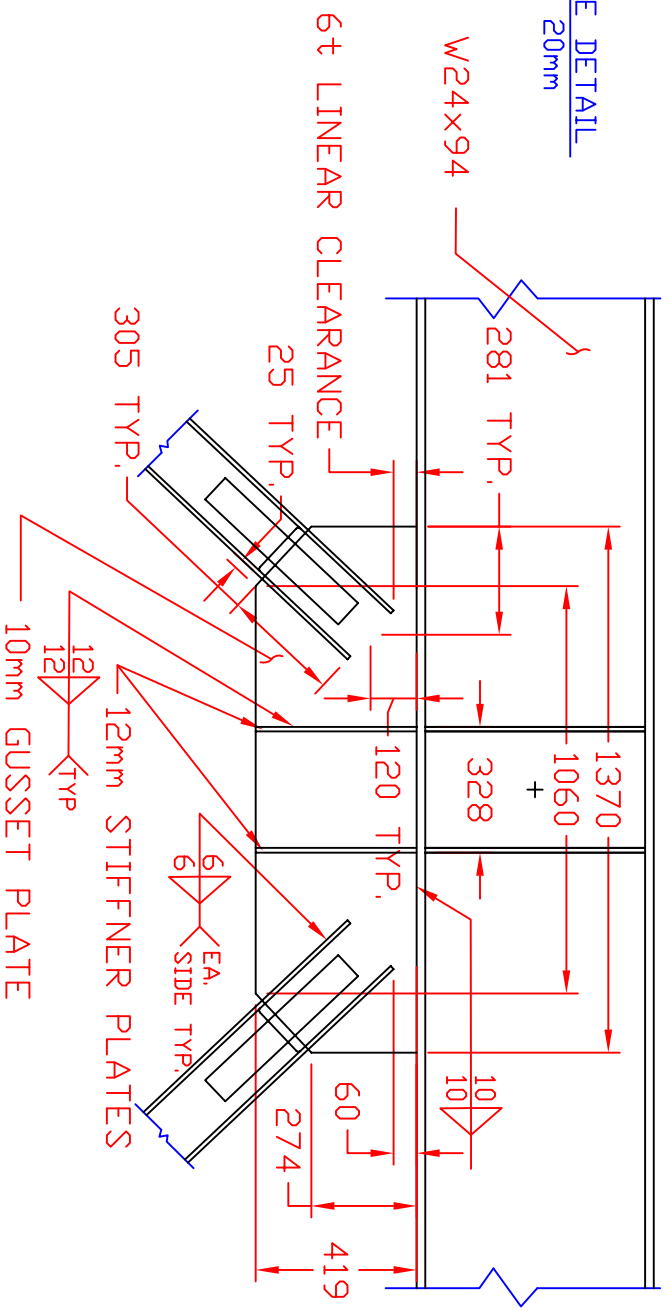


B
SK-2

GUSSET PLATE DETAIL
SCALE: 1mm = 20mm



A
SK-2

GUSSET PLATE DETAIL
SCALE: 1mm = 20mm

- NOTES:
- ALL PLATE STEEL A572 DR EQUIVALENT
 - ALL ROLLED SHAPES TO BE A992 DR EQUIVALENT
 - W/F BRACE TO BE A992 DR A36, WHICH EVER IS AVAILABLE
 - ALL WELDS TO SATISFY AISC DEMANDS CRITICAL AWS E71T8 DR EQUIVALENT
 - ALL BOLTS TO BE A490 DR EQUIVALENT WITH THREADS EXCLUDED FROM THE SHEAR PLANE

TCBF2-2 - TOMORROW'S CONCENTRIC BRACED FRAME 2-2
NEES/SG NCRCE BRACED FRAME TEST

DRAWN BY: EIL
DESIGNED BY: EIL
CHECKED BY: CWR
DATE: March 8, 2009
CONTACT: CROEDER@U.WASHINGTON.EDU

DWG:
SK-2