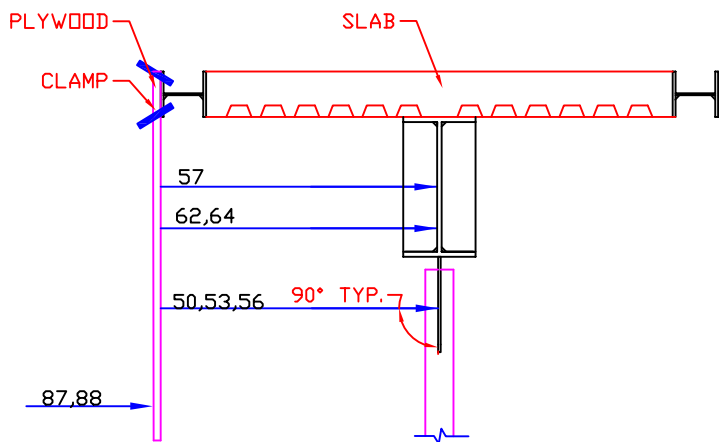


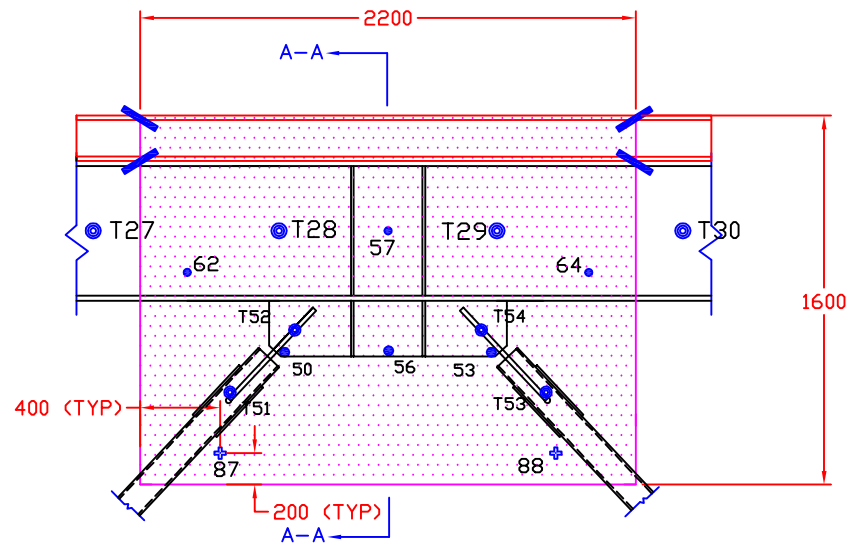
UPPER BEAM MIDDLE GUSSET PLATE

NOTE: TILTMETERS ON THE BEAM ARE IN THE SAME LOCATION AS TCBF2-1 AND TCBF2-2



SECTION A-A

NOTE: BOARD TO GO ON OPPOSITE SIDE OF POTENTIOMETER'S



NOTE: ALL STRING POTS SHOULD BE ORIENTED SUCH THAT THEY ARE PERPENDICULAR TO THE POINT OF MEASUREMENT

TCBF2-3 - TOMORROW'S CONCENTRIC BRACED FRAME

NEES/SG NCREC BRACED FRAME TEST

DRAWN BY: EIL
 DESIGNED BY: EIL, PCH
 CHECKED BY: N/A
 DATE: May 7, 2009
 CONTACT: CROEDER@U.WASHINGTON.EDU

DWG:

IN-6