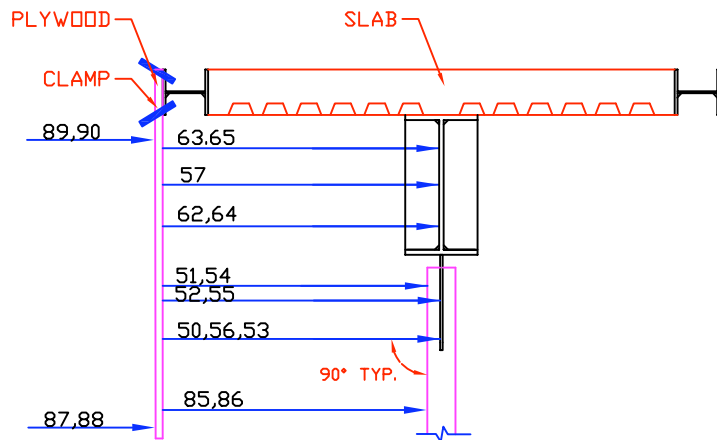
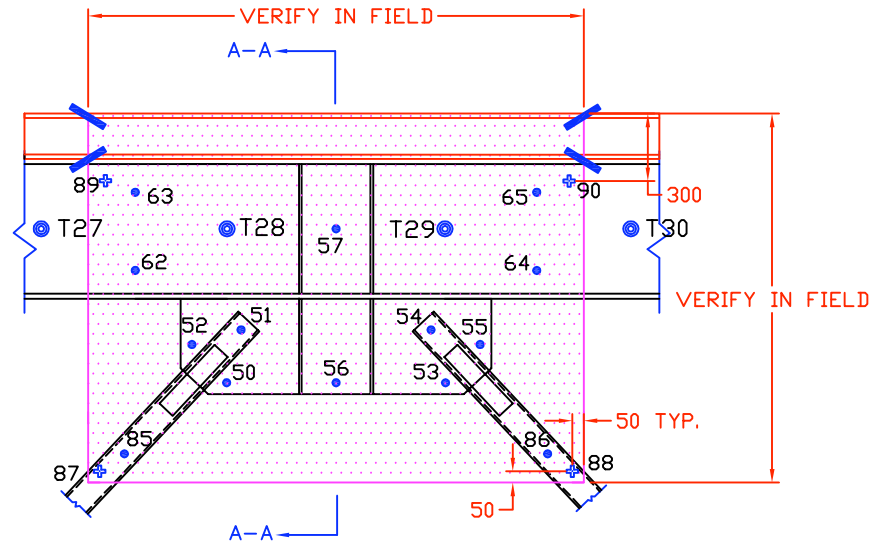


UPPER BEAM MIDDLE GUSSET PLATE



SECTION A-A

NOTE: BOARD TO GO ON OPPOSITE SIDE OF POTENTIOMETER'S



NOTE: ALL STRING POTS SHOULD BE ORIENTED SUCH THAT THEY ARE PERPENDICULAR TO THE POINT OF MEASUREMENT

TCBF4 – TOMORROW'S CONCENTRIC BRACED FRAME 4

NEES/SG NCEE BRACED FRAME TEST

DRAWN BY: EIL, KAC
 DESIGNED BY: EIL, KAC
 CHECKED BY: N/A
 DATE: JANUARY 2, 2009
 CONTACT: CROEDER@U.WASHINGTON.EDU

DWG:
IN-6