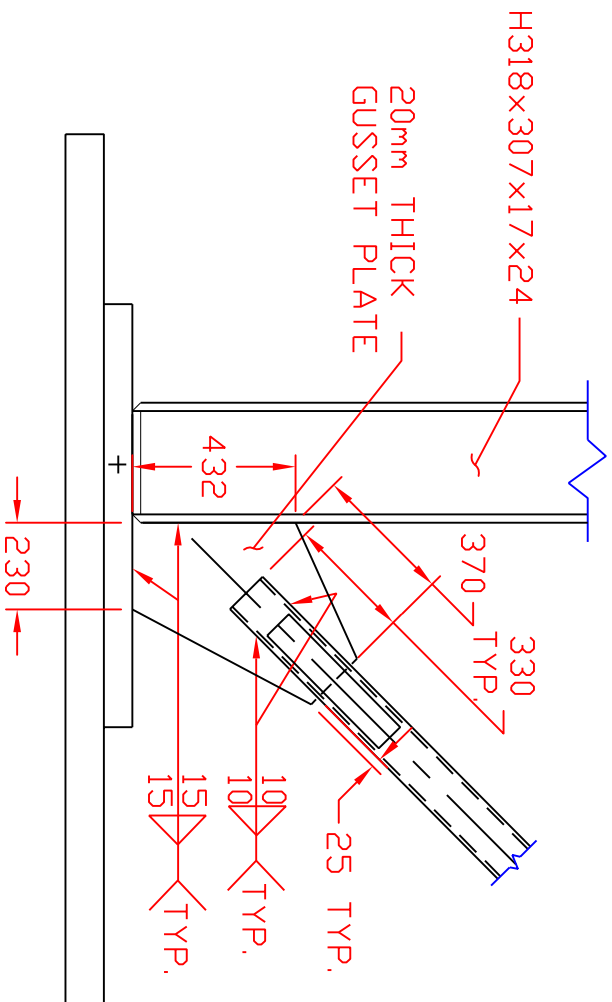
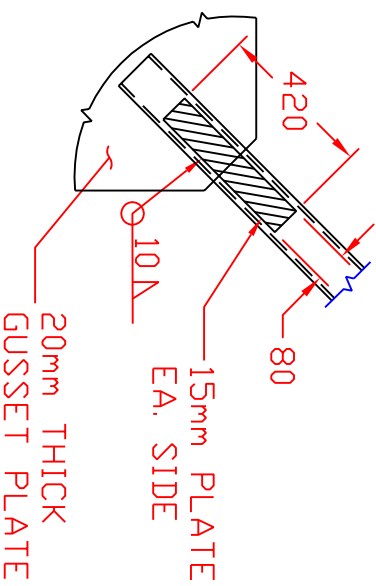


TYPICAL BRACE SLOT DETAIL  
SCALE: 1mm = 20mm



EAST BASE PLATE AND GUSSET DETAIL  
SCALE: 1mm = 20mm

A  
SK-13



B  
SK-13  
NET SECTION REINF.  
SCALE: 1mm = 20mm

NOTES:  
ALL PLATE STEEL A572 OR EQUIVALENT  
ALL ROLLED SHAPES TO BE A992 OR EQUIVALENT  
BRACE TO BE A500 B/C OR EQUIVALENT.  
ALL WELDS TO SATISFY AISC DEMANDS CRITICAL AWS E718 OR EQUIVALENT

TCBF1 - TOMORROW'S CONCENTRIC BRACED FRAME 1	
NEES/SG NCREET BRACED FRAME TEST - PHASE III	
DRAWN BY: KAC	DATE: JANUARY 28, 2008
DESIGNED BY: KAC	CONTACT: GROEDER@U.WASHINGTON.EDU
CHECKED BY: JAP	
DWG: SK-13	